

DUE: Midnight Tuesday, April 30th 2019

BOTH the [nomination](#) and [student application](#) forms **must** be submitted online by midnight April 30th.

Link #1: Online Nomination Form: <https://www.franklinexperience.org/nominate/>

Link #2: This Document: <https://www.franklinexperience.org/docs/nominate.pdf>

This document is intended to help you understand our admissions criteria, and nominate students who will:

- A. Benefit most from participating in Benjamin Franklin Experience;
- B. Improve the experience for other students;
- C. Have the highest likelihood of being accepted into the program.

Ability to pay is not a factor for admission to BFE!



BFE has a need-blind admission policy. Students are admitted solely on merit without regard to ability to pay. BFE commits to being financially accessible to all. Full and partial scholarships are awarded based on financial need, and family income. **Last year we met EVERY student's financial need.**

<https://www.franklinexperience.org/afford/>

Traits We Are Seeking in BFE Candidates

The following characteristics are those we seek and value in our students. When considering who to nominate, think about students that possess:

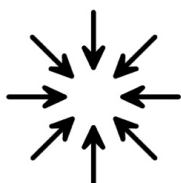
1. **Emotional maturity**—the ability to handle situations without unnecessarily escalating them.
2. **Grit in some area of their life.** We define grit as "perseverance and passion for long-term goals," whether that's academic excellence, athletics, music, performance, hobbies, care of others, etc. BFE recognizes talent in various intelligences—what is most important is that a student has shown that they have the fortitude to stick with their passions, whatever they may be.

3. **Inherent curiosity**, and a love of learning.
4. **Adaptability**, and open mindedness. BFE requires students to roll with the punches, and trust that the surprises coming around the corner are going to be something they can handle.
5. **Developed coping mechanisms**. The program requires students to step out of their comfort zones day after day. This can be stressful. Students who can manage stress will thrive in the program.
6. **Kindness**, and a desire to help others. BFE requires group work and team work. A willingness to support others through some of the more challenging experiences and exercises is very valuable to all students, and to the program.

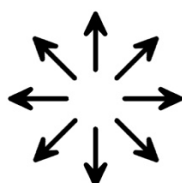
We Value All Personality Types

Don't overlook the introverts! We have found that the most successful BFE courses have a cross-section of students with dominant characteristics of introversion, extroversion, and/or leadership.

Introverts



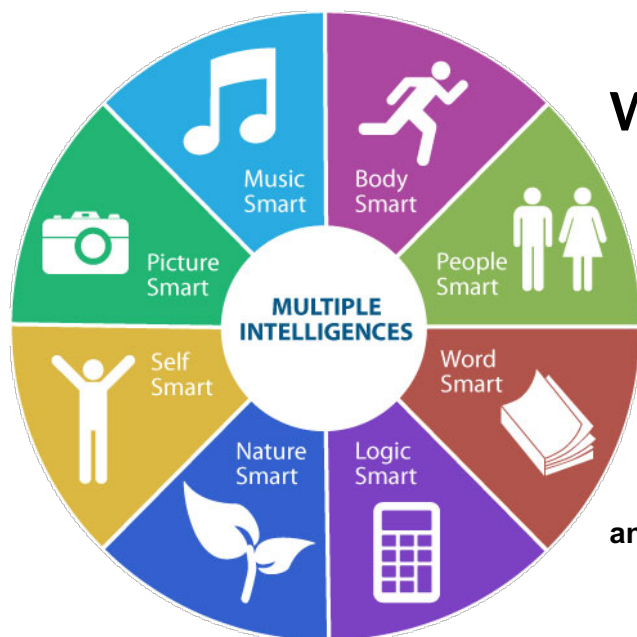
Extraverts



Leaders



We ask our nominators to help identify students' predominant personality trait so that we may better balance our groups and teams. Different experiences will allow each personality type to shine. We seek and value them all.



We Value All Intelligence Types

We are not strictly looking for students who excel academically. BFE is designed on Howard Gardner's theory of multiple intelligences. Rather than seeing intelligence as dominated by a single, general ability, we believe that intelligence consists of specific 'modalities', which can be categorized into these 8 groups.

Please consider nominating students who excel in any of these groups.

THANK YOU!!

Your nomination paints a picture of the young person we are considering for the program. We cannot thank you enough for your willingness to help highly-motivated teens connect to this rare opportunity. Many questions about the application process are answered on our website:

<https://www.FranklinExperience.org/faq/>

Intro video and overview of BFE, <https://www.FranklinExperience.org/iwish/>

Need Additional Support?

As always, if you cannot find the information you need, or if you have any questions, please do not hesitate to contact us. (864)246-8123 or apply@FranklinExperience.org

“The Guide to Nominating Students 2019” can be downloaded at:

<https://www.franklinexperience.org/docs/nominate.pdf>

Nominate students here: <https://www.franklinexperience.org/nominate/>

** Nominations take less than 5 minutes.*